

## **Historic, Archive Document**

Do not assume content reflects current scientific knowledge, policies, or practices.



62.61

RECEIVED  
★ JUN 8 1927  
U. S. DEPARTMENT OF AGRICULTURE

# Flatbush Dahlias

for 1926

**FRED VON RODECK**  
1628 EAST 9th STREET  
BROOKLYN, NEW YORK

"In the Heart of New York City"



# Flatbush Dahlias

January First

1926

To our friends and customers at this holiday season we are glad to send our greeting, with sincere wishes for a pleasant and prosperous year, particularly in the growth and development of our favorite flower, the Dahlia.

To a comparative beginner as a dealer (although we have grown Dahlias privately for the past nine years) it has been deeply gratifying to see our circle of friends extend as if by magic from coast to coast, from Texas to Manitoba. Our response must be a constantly increasing effort to render service and satisfaction at all times, and a hope that with the coming years this circle of friends will continue to grow.

We have tried to secure every worthy novelty, and to retain only the best of the older varieties. Of nearly 100 new varieties imported this year from Europe, we hope to offer next year about 15 or 18 good ones. The balance will be discarded unless a second trial proves more satisfactory. The proportion of disappointments is naturally not so large among American novelties, as we try to see them elsewhere before buying. We strongly recommend this policy to our customers—it *pays*. We shall continue to try out the best of the new introductions each year, in a location where everyone who visits New York may reach our gardens in

“Thirty minutes from Times Square.”

Just take a Brighton Subway to Kings Highway,  
or by auto, drive out Ocean Parkway to Ave. P.

FRED VON RODECK

1628 East 9th Street - Brooklyn, N. Y.

## PLEASE READ BEFORE ORDERING

*Order Early.* Our gardens are not extensive, occupying about an acre, our stock is choice, and the quantities limited.

*We Never Substitute,* unless directed. We like to receive what we order, and believe our customers want the same treatment. We will promptly refund the money for any order we are unable to fill.

*Guaranty.* We guarantee all stock true to name, and to arrive in growing condition. We will cheerfully replace any that prove otherwise, if notified promptly.

*Shipping.* All orders will be shipped about May 10, unless otherwise requested. Please be sure to write *Name* and *Address Distinctly.*

*Terms.* We prepay *all* delivery charges, and must request payment in full before orders are shipped.

*Classification.* As growers disagree on the type of many varieties of dahlias, we have preferred to classify all our varieties alphabetically, so that the reader need look in only one place for the desired variety. The type in each case is described as accurately as possible.

*Green Plants.* As the leading growers seem to disagree as to the desirability of green plants, we must necessarily rely on our own judgment. It has been our experience that plants will grow and bloom fully as well as tubers. *But* a certain proportion of the clumps from plants will either die during the following winter or produce weak and diseased stock the following year. We, therefore, have discontinued offering green plants, as we do not feel that the saving in cost justifies the risk involved.

*Full Cultural Directions* enclosed with each order.

# Flatbush Dahlias

ALEX-WALDIE (*Decorative*), Broomall Tubers, \$1.00

This beautiful dahlia opens pure creamy yellow, as the outer petals develop, they gradually become overcast with a faint tinge of pink. Large, good bloomer, held well above the foliage on fine stiff stems.

AMBASSADOR (*Cactus*), Broomall Tubers, \$2.00

A sensation. Has won prizes wherever exhibited since its introduction in 1921. Color, soft yellow center with salmon, amber and pink shadings deepening gradually toward the tips and outer petals. The heaviest cactus dahlia we know, carried well on good stems, on a rather low, spreading bush.

AMBER GLOW (*Cactus*), Boston Tubers, \$1.50

A cactus of true English type, petals long, narrow and straight. Size immense, color bright yellow, deepening to pale orange at center.

AMERICANA (*Decorative*), Boston Tubers, \$2.50

A large deep flower, composed of many shell like petals of a soft unshaded rose pink, carried on stiff stems, growing about four feet long, and requiring little disbudding.

AMIGO (*Decorative*), Boston Tubers, \$2.00

Distinctive among the newer yellows for perfection of form and grace of carriage, growing on long stems which never droop, and are not stiffly erect, but always curve so that the flower faces about sideways. Color, a clear glowing yellow.

ANTOINETTE (*Hybrid Cactus*), Boston, 1925 Tubers, \$4.00

Fine free-blooming variety, with large flowers on good stems, composed of many long narrow twisted petals. Color a delicate rose pink, and fully double throughout the season.

AZUSA (*Decorative*), Broomall, 1925 Tubers, \$4.00

One of the finest novelties in our garden last summer. Flowers of the largest size, pure delicate pink shading to blush center perfectly formed and carried stiffly erect on long straight stems.

BALLET GIRL (*Cactus*), Boston Tubers, \$1.00

A cactus of true English type, with blooms in a bewildering variety of colors. Some flowers are orange with white tips, some all orange, some red with white tips, some nearly all red, and some red and orange.

BERTHA JOST (*Decorative*), Jost Tubers, \$3.00

Sulphur yellow, with outer petals blended peach pink, and center tipped with burnt orange. A large, free-flowering dahlia, carried well on long stems.

BOHEMIA (*Hybrid Decorative*) Tubers, \$ .35

A glowing crimson dahlia of medium size, averaging four to five inches across if disbudded. We believe this to be the best selling red commercial variety in the New York market at the present time. For keeping qualities, it has OUTLASTED ANY OTHER VARIETY GROWN, in open competition at the A. D. S. Show in New York, September 1923.



- CALIFORNIA BEAUTY (*Hybrid Cactus*), Broomall Tubers, \$ .75  
 The color, generally described as pure copper, is the final touch needed to make this medium-sized dahlia an IDEAL CUT FLOWER. The blooms, resembling Golden West in form, are produced in great profusion on stiff wiry stems, and are remarkably fine keepers when cut. We can recommend this as one of the most satisfactory dahlias grown.
- CALIFORNIA SUPERBA (*Decorative*), Boston Tubers, \$2.00  
 Beautiful large well-formed flowers of a delicate shade of clear pink shading to a lighter center. Blooms freely and holds flowers well up on good stems.
- CHARM (*Decorative*), Marean Tubers, \$1.50  
 One of the finest of the famous Marean varieties. Although not new, a vase of this variety at the New York Show last September attracted fully as much attention as any new variety offered. Perfect decorative form, carried gracefully poised on good stiff stems, the rich color of foliage and stems setting off the burnt-orange blooms most effectively.
- CONSTANCY (*Decorative*), Seal Tubers, \$2.50  
 Large well formed flower of an unusually deep shade of glowing pink, carried erect on fine stems.
- COUNTESS OF LONSDALE (*Hybrid Cactus*), Cannell Tubers, \$ .35  
 Beautifully formed medium-sized flowers of old rose, shaded salmon, produced freely on low growing stocky bushes. Probably the oldest hybrid cactus variety on the market, but still highly desirable both for garden and cutting.
- DADDY BUTLER (*Hybrid Cactus*), Boston Tubers, \$2.50  
 Very fine free-blooming variety of a rich deep rose color, with the reverse of petals showing bluish pink. Large flowers of great depth carried well on good stems.
- DELICE (*Decorative*) Tubers, \$ .35  
 Another of the older varieties which still holds its own, as it is the clearest, purest shade of light pink yet produced in a dahlia. A large vase of this variety at the New York Exhibition last fall caused more favorable comment than some of the novelties shown for the first time.
- DIANA (*Hybrid Cactus*) Tubers, \$ .50  
 Large striking flower of rich crimson, with petals slightly curled.
- DREER'S YELLOW (*Show*) Tubers, \$ .35  
 Well formed flowers of good size and clear golden yellow color, carried erect on good stems.
- EAGLE, THE (*Hybrid Cactus*), Burns Tubers, \$ .50  
 Sulphur yellow, fine large flower on stiff stems and a good keeper.
- EARLE WILLIAMS (*Decorative*), Doolittle Tubers, \$2.00  
 We have found this variety practically identical with Nobilis, and therefore do not list them separately. Stock of both has shown flowers varying from nearly all white through the usual red and white variegations to show some blooms entirely red. Bush vigorous, and entirely satisfactory.
- EDITH SLOCOMBE (*Hybrid Cactus*), Slocombe Tubers, \$1.50  
 Perfectly formed rich velvety purplish maroon flowers, with petals curled and twisted in the ideal Hybrid cactus type, carried on long wiry stems. Without exception the finest dahlia of its color.



ELDORADO (*Decorative*), Boston Tubers, \$5.00

One of the largest deep golden yellow dahlias, of perfect decorative type, set facing on stiff stems, rising well above a low spreading bush. A flower that must be seen to be fully appreciated. Fine for exhibition, garden or cutting.

ELIZA CLARK BULL (*Decorative*), Boston, 1924 Tubers, \$7.50

Generally considered the best pure white dahlia grown. One of the biggest and deepest flowers in its class. The form is perfect, and the petals are just enough irregular to avoid the appearance of stiff formality so often found in the best large decorative varieties. Blooms freely on bushes of medium height.

ELLINOR VANDERVEER (*Decorative*), Seal, 1925 Tubers, \$7.50

Without doubt, this is the finest variety introduced in 1925. Similar in type to I. de ver Warner, this new variety is even larger, and a beautiful shade of true light pink. Clean vigorous plants of erect habit, holding flowers high on perfect stems. A sensation wherever grown.

EMIL PANUSKI (*Show*) Tubers, \$ .35

This variety, now offered to the public for the first time, resembles in color the old decorative "Le Grand Manitou," being striped maroon on light lavender ground occasionally sporting to a solid maroon flower. The form, however, is a perfect show of the largest size growing on vigorous bushes which carry the blooms on stiff stems well above the foliage. As we have a considerable stock of this variety, and are somewhat crowded for space, we are offering it at a price intended simply to make friends and regardless of its actual value. (This variety sells in the New York cut-flower market at \$1.50 to \$2.00 per dozen WHOLESALE.

ESTHER R. HOLMES (*Cactus*), Greinberg Tubers, \$2.00

For several years we have been undecided as to whether we should add "Attraction" to our collection or not. But now we need not, for this variety has all the desirable features of Attraction to a greater degree, with no bad points that we have yet discovered. Color, clear rosy lilac, extending nearly to the center of the flower, and one of the few true cactus varieties which are really held up on good stems. Good bloomer and good keeper when cut.

ETENDARD DE LYON (*Hybrid Cactus*) Tubers, \$ .50

One of the best of the older standard varieties. Large purplish violet flowers carried erect on good stems. Petals curled and waved, producing a graceful, rather than heavy, bloom.

F. W. FELLOWS (*Cactus*), Stredwick Tubers, \$ .75

One of the finest English cactus dahlias yet produced. Large size, perfect form, and color clear deep orange. Equally good for both exhibition and garden.

FAITH GARIBALDI (*Decorative*), Boston, 1925 Tubers, \$7.50

A striking novelty introduced by Bessie Boston. Although not one of her own seedlings, she is most enthusiastic in praise of this superb rose pink decorative. In habit of growth, formation and texture of petals, this is a truly majestic flower.

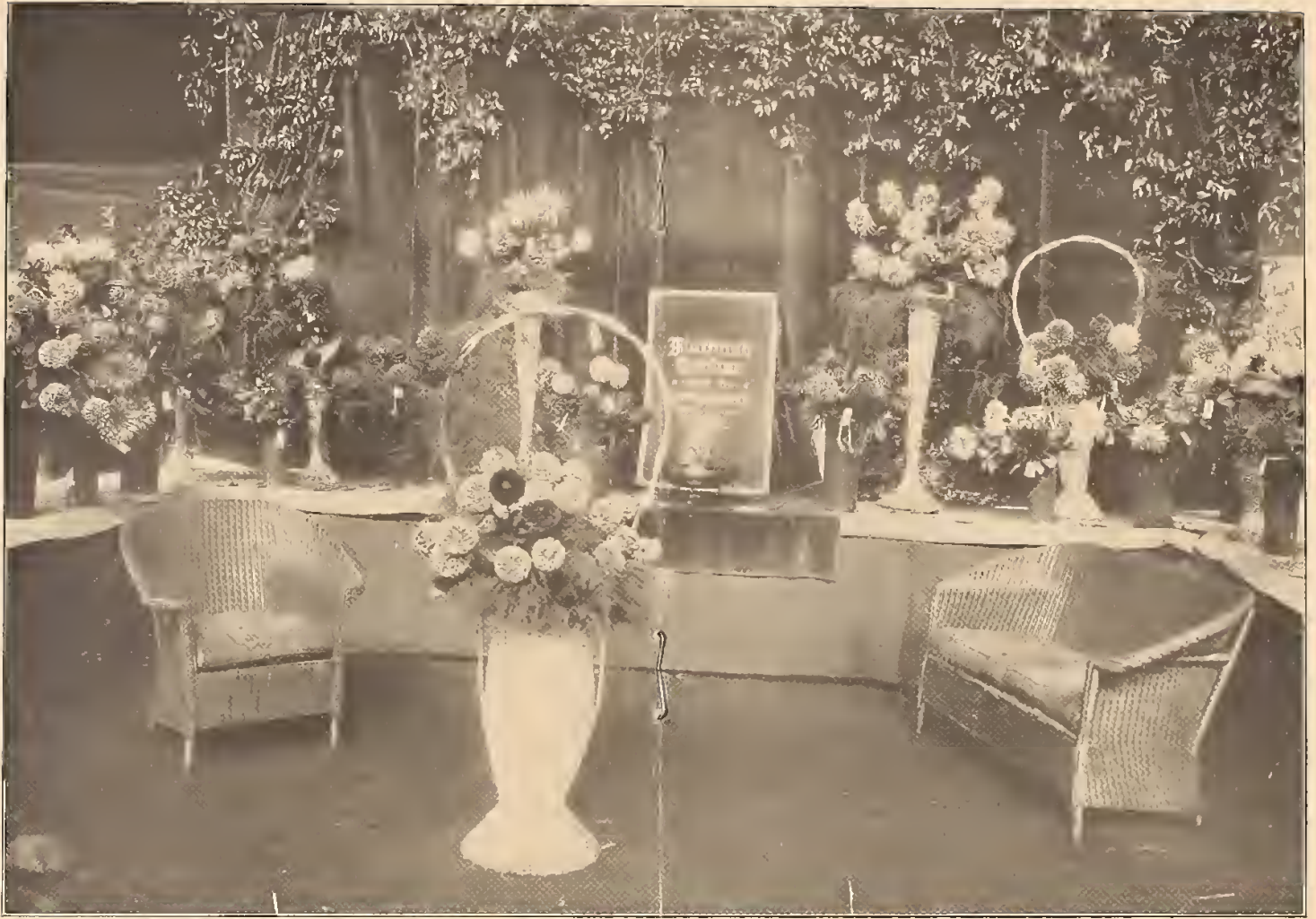
GEORGE WALTERS (*Hybrid Cactus*), Carter Tubers, \$ .75

Another of the standard varieties which still holds its own with the best. Color, deep pinkish salmon, suffused with gold at the base of petals. A tall growing, vigorous free bloomer, carrying a surprising number of enormous flowers on long stiff stems.

GEORGE W. GERO (*Show*) Tubers, \$ .50

One of the newer show varieties, whose color, we believe the finest clear rose pink yet produced in any dahlia.





## Flatbush Dahlias

as exhibited at the show of the American Dahlia Society—New York, Sept. 29 to Oct. 1, 1925.

- GLORIANNA (*Decorative*), Hodgens Tubers, \$1.00  
 Vigorous free-flowering variety bearing large old gold flowers on long wiry stems.
- GOLDEN OPPORTUNITY (*Show*) Tubers, \$ .35  
 Another fine show, similar to Clara Seaton. Color, rich buttercup yellow shading to burnt orange at center.
- GRIZZLY, THE (*Decorative*), Burns Tubers, \$1.00  
 One of the deepest maroon reds grown, appearing almost black. Extra large flowers with loose reflexed petals carried erect on long stems (generally three feet or longer).
- HORTULANUS FIET (*Decorative*), Hornsveld Tubers, \$ .50  
 Generally considered the standard of comparison for perfection of form in the decorative class. Extra large flowers of a delicate shade of shrimp pink carried erect on stiff stems set well above a low spreading bush.
- INSULINDE (*Decorative*), Hornsveld Tubers, \$1.00  
 Beautifully curled and twisted flowers of bronzy orange, set squarely on top of remarkably stiff heavy stems. One of the best for cutting and generally regarded as the best Holland variety yet produced.
- J. W. LEE (*Hybrid Cactus*), Lee Tubers, \$2.00  
 Very fine large flowers borne freely on strong erect stems. Color, bright orange scarlet, showing clear yellow at base of petals.
- JERSEY'S BEAUTY (*Decorative*), Waite Tubers, \$3.50  
 Recognized by all as the finest large pink dahlia in existence. The flowers are not only gorgeous in color, but perfect in form, and borne on long stiff straight stems. A profuse bloomer and a splendid keeper when cut.
- JERSEY'S JOY (*Decorative*), Waite Tubers, \$3.00  
 A new introduction. Rich golden yellow flowers of fine formation and good size, produced freely on fine stems.
- JERSEY'S PRIDE (*Decorative*), Waite Tubers, \$2.00  
 A very pleasing combination of deep yellow and pinkish buff. Large graceful flowers of great substance opening to a perfect ball of glowing color.
- JERSEY'S RADIANT (*Hybrid Cactus*), Waite Tubers, \$5.00  
 Bitter sweet orange, produced on large stiff brown stems. A very attractive variety, always much admired.
- JERSEY SOVEREIGN (*Decorative*), Waite Tubers, \$5.00  
 A new introduction last year. A gorgeous and unusual color, classified in Ridgeway's chart as Salmon Orange. A vigorous grower with very dark foliage, flowers of good size on stiff erect stems.
- JUDGE A. B. PARKER (*Decorative*), Marean Tubers, \$1.50  
 The large perfectly formed flowers grow freely on strong erect stems. Color, a very fine glowing brownish shade, generally described as golden buff. A remarkably fine exhibition and garden variety.
- JUDGE MAREAN (*Decorative*), Marean Tubers, \$1.50  
 One of the earliest and best known of the popular Marean varieties. Very large flowers of perfect form, blooming profusely on straight erect stems. Color in the bud almost a deep watermelon red, fading as the flower opens through successive tints of salmon pink, orange and yellow.



- KITTY DUNLAP (*Decorative*), Boston Tubers, \$1.00  
 Large perfectly formed flowers of a color very near that of the American Beauty rose, always set squarely on top of long firm stems. Free bloomer and good keeper.
- LA FAVORITA (*Hybrid Cactus*), Lohrmann Tubers, \$ .50  
 A vigorous growing, free flowering variety of a most unusual shade of brilliant salmon. Large, well formed flowers carried on strong stems.
- LECIAN VON BERNUTH (*Hybrid Cactus*), Greinberg Tubers, \$1.50  
 Center yellow, outer half of petals deep flame color. Good-sized flowers held well above foliage.
- LOS ANGELES (*Cactus*), Broomall Tubers, \$ .75  
 One of the best bright yellow cactus. A California variety, strong grower and beautifully formed flower.
- LOTUS (*Decorative*), Boston Tubers, \$1.00  
 Like the Amun Ra, this variety is the new "Water Lily" type of flower. While not quite so large, it is a deeper, clearer shade of orange, with a metallic lustre. Free bloomer on long straight stems, and keeps well when cut.
- MME. BUTTERFLY (*Decorative Peony*) Tubers, \$ .40  
 Graceful, medium-sized flowers of creamy pink shades with a distinct dusting of gold on every petal.
- MANDALAY (*Hybrid Cactus*), Jost Tubers, \$2.00  
 Extremely free-flowing variety, producing an abundance of "butterfly like flowers of tawny gold, shading to amber at the center, with bronze reflex." This flower reminds us irresistibly of the blazing sun on the Japanese Imperial flag.
- MARIPOSA (*Hybrid Cactus*), Boston Tubers, \$3.00  
 One of the most beautiful dahlias of recent introduction. A beautifully formed flower of long petals so twisted and curled as to baffle a photographer. Color varies in different localities from a clear light pink to pinkish lavender. Remarkably free bloomer, carrying perfectly double flowers on stiff three-foot stems right up to the end of the season.
- MAYBELLE ECKLAND (*Dec. Peony*), Doolittle Tubers, \$ .50  
 Large flower of most unusual coloring, every flower showing some petals of deep maroon and some of crimson, although generally the deeper shade predominates. Can be cut with five-foot stems.
- MEPHISTOPHELES (*Hybrid Decorative*), Marean Tubers, \$1.50  
 In form, one of the most perfect dahlias ever offered, almost seeming to have been carved rather than grown. Color, a glowing crimson-scarlet, sometimes with the very tips of the petals showing a golden light point. Does not bloom as freely as some, but every flower stands regally on the top of a stout stem.
- MISS NEW YORK (*Cactus*), Badetty, 1925 Tubers, \$7.50  
 The largest cactus we have yet seen, of the true English type, with petals gracefully curled and twisted. Color, rich wine-red, with silvery reverse.
- MR. CROWLEY (*Decorative*), Broomall Tubers, \$2.00  
 Beautifully formed flower of a deep rich shade of clear salmon, with a pure yellow center. The crown bud sets deep among the foliage, on short stems, but the lateral buds produce good stems, always stiffly erect.
- MRS. ALFRED HARVEY (*Cactus*), Stredwick Tubers, \$1.00  
 One of the best recent importations. A large full flower, of a beautiful light salmon pink. Vigorous plants carry the flowers upright on strong wiry stems.

- MRS. CARL SALBACH (*Decorative*), Salbach Tubers, \$ .75  
 This dahlia has created a sensation wherever shown. The flowers are large, of great depth, and perfect formation. Color, a charming shade of lavender pink, lighting up exceptionally well under artificial light. The stems are, without exception, the best we have yet seen, making this variety pre-eminent as the ideal cut-flower variety.
- MRS. CHARLES CHASE (*Decorative*) Tubers, \$2.00  
 A beautiful true pink Dahlia, in color similar to the Enchantress carnation. Good sized flowers, desirable for cutting.
- MRS. E. L. LINDSAY (*Decorative*), Broomall Tubers, \$2.00  
 The gorgeous scarlet and gold coloring of the well-known "Geisha," reproduced in an enormous full-centered decorative. Three blooms nine inches across were cut at one time from the same bush. Stems long and stiff. Keep well when cut.
- MRS. ELEANOR MARTIN (*Decorative*), Pelicano Tubers, \$3.50  
 One of the most perfectly formed Dahlias we have ever been privileged to see. Good size, good stems, on clean vigorous plants. Most unusual color, generally described as mulberry, fading in cooler weather to show peculiar bluish tints.
- MR. H. C. DRESSELHUYS (*Decorative*) Tubers, \$ .75  
 This variety is one of the best recent Holland introductions, which will certainly displace the old favorite "Delice", being a slightly richer shade of clear pink, larger, better bloomer, and carried on better stems.
- MRS. I. DE VER WARNER (*Decorative*), Marean Tubers, \$1.50  
 Color, deep mauve pink, or rosy lavender. Large perfect flowers borne freely on stout stems. One of the best of the famous "Marean" dahlias.
- MRS. NATHANIEL SLOCOMBE (*Decorative*), Tubers, \$1.00  
 One of the finest free-blooming clear deep yellows, with beautifully formed flowers of fair size.
- MRS. RICHARD LOHRMANN (*Hybrid Cactus*), Tubers, \$ .75  
 A pure golden yellow of large size, with broad curled petals of good substance.
- MRS. W. d'ARCY RYAN (*Decorative*), Boston Tubers, \$2.50  
 Large regularly formed flowers held proudly erect on perfectly stiff stems. Color, clear rich copper, sometimes shading to old gold.
- MRS. WM. WINCOTT (*Decorative*), Babylon Tubers, \$ .75  
 Beautifully formed flower of soft creamy yellow, held upright good stems.
- MORDELLA (*Decorative*) Tubers, \$5.00  
 One of the outstanding recent New Jersey offerings, being a perfect 9-inch flower held well above the foliage on long graceful stems. Vigorous, profuse bloomer. Color, remarkably glowing shade of clear apricot-buff.
- MYRA VALENTINE (*Hybrid Decorative*), Mills Tubers, \$2.50  
 Very large golden bronze flowers on fine long stems.
- NICHU (*Hybrid Cactus*), Boston, 1925 Tubers, \$7.50  
 Very fine, large loosely incurved flower of clear butter yellow. Offered as an improvement on the old "Yellow King," it is without doubt worthy of this title.
- NOBILIS (*See Earle Williams*)

- OLIVE REED (*Decorative*), Seal, 1925 Tubers, \$7.50  
 A truly massive Dahlia, of a clear pure shade of yellow, so fully double that the petals are crowded backward to meet at the stem, forming a golden ball, carried stiffly erect on strong rigid stems.
- ORIOLE (*Peony*), Burns Tubers, \$1.00  
 One of the best peony Dahlias, fully double early in the season, the flowers showing a pleasing variety of autumn shades varying shades of orange and red, sometimes tipped white.
- PAPILLON (*Hybrid Cactus*), Boston Tubers, \$2.50  
 One of the big new ones which has been grown successfully everywhere and has been in many prize-winning collections. Color, a beautiful deep shade of old rose with golden lights. An incessant bloomer, carried gracefully erect on long strong branches.
- PAUL MICHAEL (*Decorative*), Michael Tubers, \$1.50  
 Can be grown to majestic size for exhibition if shaded a week before showing. Color, the clearest, deepest shade of pure gold yet produced in a dahlia.
- PEARL RUGGLES (*Peony*), Ruggles Tubers, \$1.00  
 An exquisite coloring of cerise pink, splendid formation and stem.
- PIERROT (*Cactus*), Stredwick Tubers, \$ .50  
 Graceful flower of long tubular incurved petals of a deep amber color, usually showing white tips.
- PRIDE OF CALIFORNIA (*Decorative*), Lohrmann Tubers, \$ .50  
 Color, brilliant glowing scarlet, shading deeper at the center. We have a good stock of this variety which has vigor, size, color, stem—in fact, every desirable feature. We consider it among the very best dahlias grown today.
- PRISCILLA (*Decorative*), Hodgens Tubers, \$1.00  
 A most unusual habit; the plant might almost be described as a creeper rather than a bush. The large flowers of a delicate shade of blush pink are very effective against the carpeting foliage.
- ROBERT TREAT (*Decorative*), Mueller Tubers, \$7.50  
 This sensational variety forms a large vigorous bush, producing freely the perfectly formed flowers, of a color unlike any other Dahlia—described as a “brilliant American Beauty red.” A prize-winner wherever shown.
- ROMANY (*Hybrid Cactus*), Boston Tubers, \$1.50  
 A splendid addition to the hybrids, as the formation is flawless. Long, closely rolled incurved petals form a large, substantial bloom. Color, a bright geranium scarlet which will not burn in the hottest sunshine.
- ROOKWOOD (*Decorative*), Boston Tubers, \$2.50  
 For sheer beauty the Rookwood is unsurpassed. A persistent prize winner wherever shown, the cut blooms will keep as long as any large flowering dahlia we know. The coloring is an entirely new shade of pink, best described as cerise rose, and is as beautiful under artificial light as the popular Mrs. Charles Russell rose. Flowers are immense and produced freely on splendid stems, rising well above a low spreading bush.
- ROSA NELL (*Decorative*), Broomall Tubers, \$1.00  
 Claimed by the introducer to be the greatest of all decorative dahlias. Color, clear bright rose, flowers are large and well formed. Stem is excellent and blooms most freely.



- SENORITA (*Hybrid Decorative*), Lohrmann Tubers, \$1.50  
 A giant hybrid of rich velvety maroon color, carried erect on extra strong stems. Plant grows low, but blooms freely.
- SILVERHILL PARK (*Cactus*), Stredwick Tubers, \$1.50  
 Pure white, beautifully incurved in form and with perfect center.
- SUPT. AMRHYN (*Show*) Tubers, \$1.50  
 The best of many recent offerings in its color. Rich lavender pink, carried freely on good stems. A real good show Dahlia.
- TOMMY ATKINS (*Decorative*), Boston Tubers, \$2.00  
 The originator writes "there never was such a startling color—flaming scarlet—so full of metallic lustre that it fairly glistens in the sunshine." Large well-formed flowers, though not stiff and formal, and are carried on stiff stems.
- VIOLETTA (*Hybrid Cactus*), Waite Tubers, \$3.50  
 Color, petunia violet. This variety, like all of Mr. Waite's introductions, has always been in great demand. Habit, vigorous and free blooming. Fine stems.
- W. E. COOPER (*Decorative*), Boston Tubes, \$1.50  
 Large flowers borne freely on stems so straight and strong that every flower looks one right in the eye. Color, a TRUE PINK without the least suggestion of salmon or lavender.
- W. W. RAWSON (*Show*) Tubers, \$ .50  
 Very large flowers, pure white overlaid with amethyst-blue, giving an appearance of delicate lavender.
- WELTFRIEDEN (*Hybrid Cactus*) Tubers, \$ .75  
 One of the newer European introductions. A white hybrid cactus of exquisite form and medium size ideal for a white cut-flower variety.
- WINFIELD SLOCOMBE (*Decorative*), Slocombe Tubers, \$2.00  
 The most beautiful clear orange-colored Dahlia to date. Constant bloomer, and one of the few Dahlias in which it is hard to pick any fault.
- WINTER TIME (*Cactus*), Murphy Tubers, \$3.50  
 The best white cactus yet produced. Strong plant, good stems, and large upright flowers.
- WORLD'S BEST WHITE (*Decorative*), Murphy Tubers, \$3.00  
 Color, white, with a decided creamy center. Long, heavy petals produce a flower not only broad, but deep, recurving at the back to form almost a complete ball. One of the most vigorous dahlias we have seen; in fact, it is astonishing, the number of large flowers in bloom at one time on the same bush, and always carried on perfect stems.

---

## Cut Flowers

Dahlia Blossoms are for sale at all times  
 during the flowering season.



You are invited to become a member of

## **The American Dahlia Society**

The Quarterly Bulletin of the Society, containing  
valuable information on Dahlia growing,  
is sent free to every member.

Dues, \$2.00 per year.

Write Wm. J. Rathgeber, Secretary  
198 Norton St., New Haven, Conn.